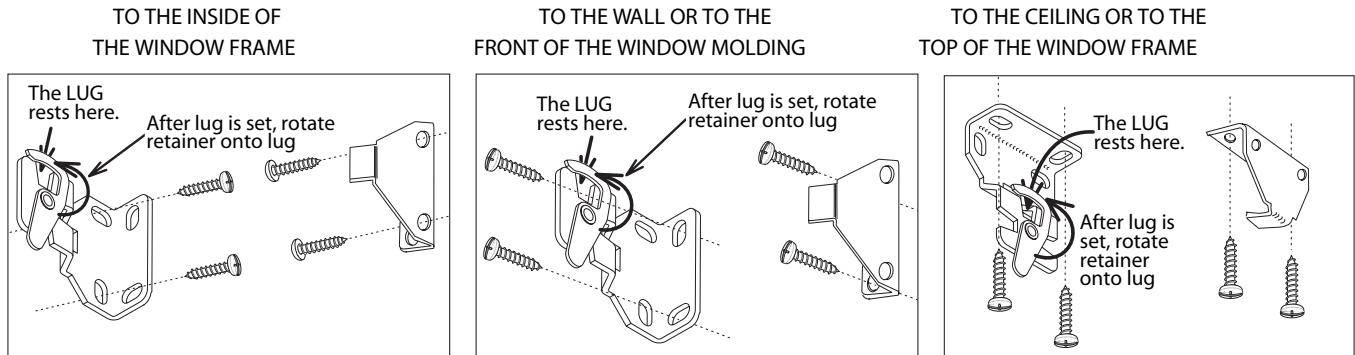


INSTALLATION

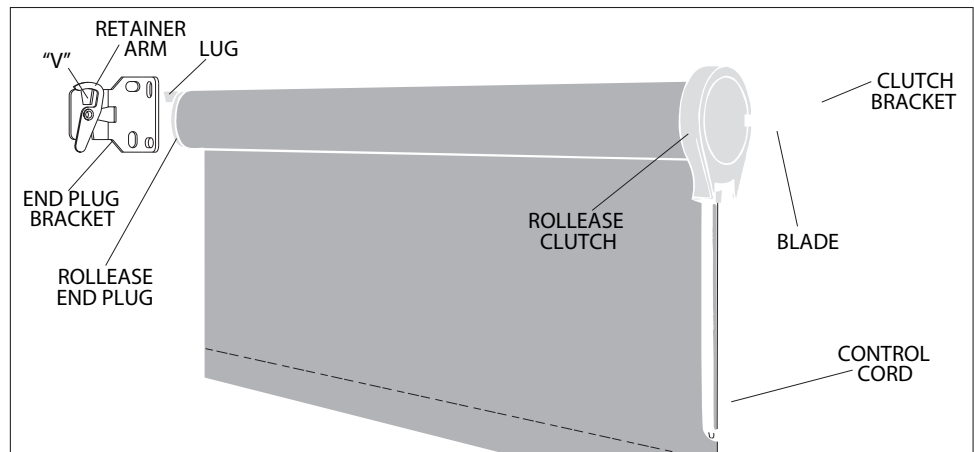
1. MOUNT THE BRACKETS.

If the clutch is on the right end of the shade, attach the brackets to the window frame, window molding, wall or ceiling, as shown below.
 If the clutch is on the left end of the shade, reverse the bracket positions, left for right.



2. INSTALL THE SHADE.

- a. Push the clutch straight onto the blade of its bracket. The bottom of the clutch should always point straight down.
- b. Lower the lug of the end plug onto the "V" of its bracket. The roller should fit in the brackets securely, with just a little play. Rotate the riveted retainer portion to lock the lug in position.



3. INSTALL THE TENSION DEVICE

Please see page 2 for instructions.

4. USE THE CONTROL CORD TO OPERATE THE SHADE.

Pulling gently on the cord in one direction raises the shade; pulling it in the other direction lowers it.

On shades where the fabric rolls against the window, the front cord does the raising. On shades where the fabric rolls toward the room, the rear cord does the raising.

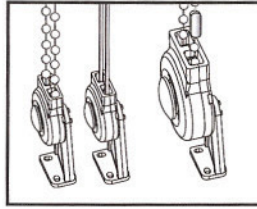
5. ATTACH STOPS TO A CONTROL CORD THAT'S MADE OF BEAD CHAIN.

On metal bead chain, attach a metal stop ball that is at least 5/16" in diameter, so that it touches the mouth of the clutch when the shade is in the all-rolled-up position.

For metal or plastic bead chain, lower the shade to sill or floor height, and attach the appropriate metal stop or plastic connector next to the clutch, this prevents the shade from being lowered beyond that point.

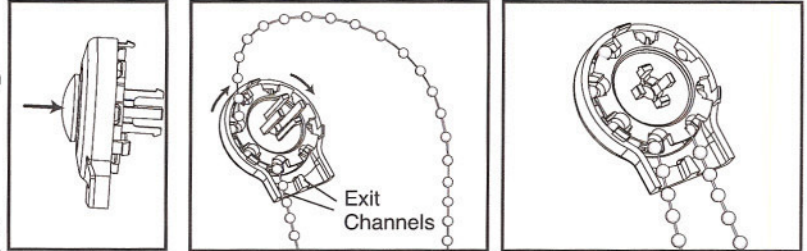
Instructions: RollEase WCMA - ANSI 6.5 Compliant Tension Device

1. MOUNT SHADE IN WINDOW shade should be mounted as usual.



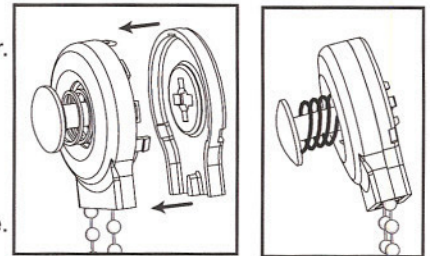
3. MATE TENSION DEVICE WITH CONTROL LOOP Press the center round button on the tension device which exposes the pulley on the opposite side. Hold the tension device by the outside cover. Wrap the loop around the pulley.

Release the center post which will trap the loop. Be sure the control cord/chain exits the channels at the narrow end as shown.



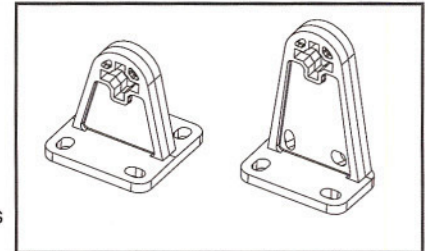
4. SNAP TOGETHER

Align the latches and slots of the front assembly and the back cover and snap together. Make sure the loop is not pinched by the two mating parts. Pull on cord/chain to test that the cord/bead chain does not move and is locked. Note the button must be out to lock loop.



5. INSTALL MOUNTING BRACKET

Determine which direction the mounting bracket will face relative to the Tension Device. Make sure the Tension Device will be snapped into the mounting stand in the same correct direction. **Before** attaching Tension Device to the base, measure and mark the location in the window where the tension device will be mounted. Mount the base in position without the tension device attached. Position the Tension Device on the window frame or the wall so that the Tension Device and control cord/chain does not interfere with raising or lowering the shade. **The Tension Device should be installed so that cord/bead chain is taut without stretching or pulling down on it. Stretching the cord/bead chain will cause excessive wear. Do not twist or cross the control cord/bead chain.** Holding the Tension Device upright, and in position, as shown, insert and secure the two screws through holes in the mounting bracket. **The mounting screws must be secured into a solid surface or molly.**



On inside mount shades the Tension Device may be mounted to the window sill, or side window frame or when the treatment spans beyond the window frame it may be mounted to the wall.

6. MATE TENSION DEVICE TO MOUNTING BRACKET

Once the tension device is snapped to the base it is designed not to be removed.

Press center round button exposing the four latching legs and press into the corresponding thru-hole of the mounting bracket stand until they latches snap and lock to the mounting stand. The loop should now pass freely through the Tension Device.

