



Roller Shade

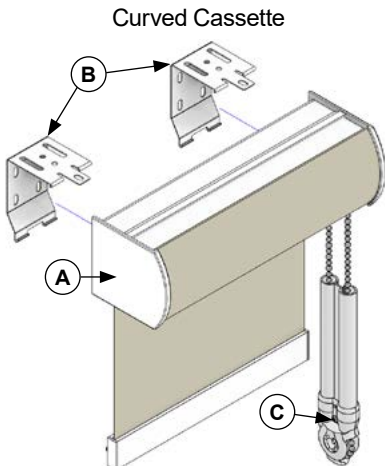
Curved Cassette & Compact Curved Cassette Installation Instructions

 WARNING	 MISE EN GARDE
<p>STRANGULATION HAZARD — Young children can be strangled by cords. Immediately remove this product if a cord longer than 22 cm or a loop exceeding 44 cm around becomes accessible.</p>	<p>RISQUE D'ÉTRANGLEMENT — Les enfants en bas âge peuvent s'étrangler avec des cordes. Enlevez immédiatement ce produit si une corde mesurant plus de 22 cm devient accessible ou si le contour d'une boucle de plus de 44 cm devient accessible.</p>

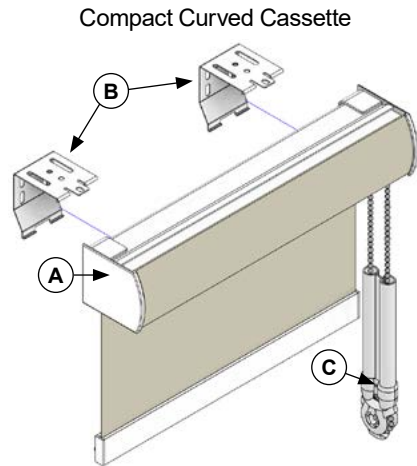
NOTE: Fabric wrapped valances must be handled with care

1 PREPARATION

Curved Cassette



Compact Curved Cassette



Component List

A. Shade
B. Mounting Brackets
C. Safety Shield

2 DETERMINE NUMBER OF BRACKETS

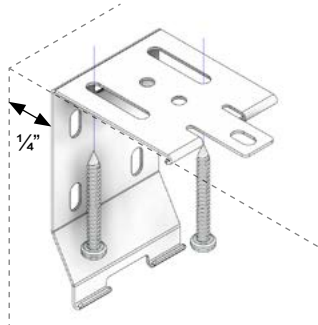
Shade Width	<60"	60" to 96"	96" to 120"	120" to 148"	>148"
# of Brackets	2	3	4	5	6

- Brackets should be no further than 2" from the ends of the cassette.
- The brackets should be equally spaced.
- The brackets should be installed level and aligned to each other. Shimming may be required.

3 MOUNT THE BRACKETS

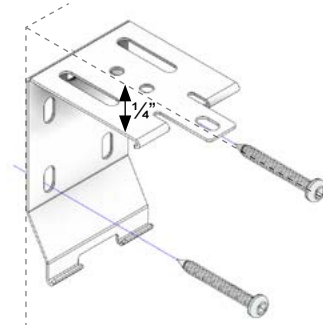
CEILING MOUNT

leave a 1/4" between the wall and the mounting bracket



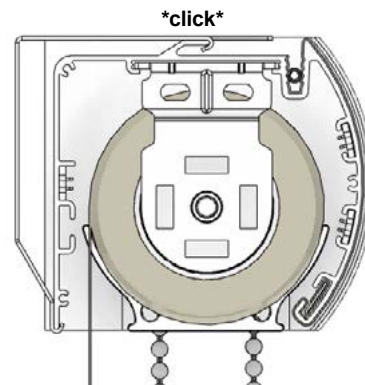
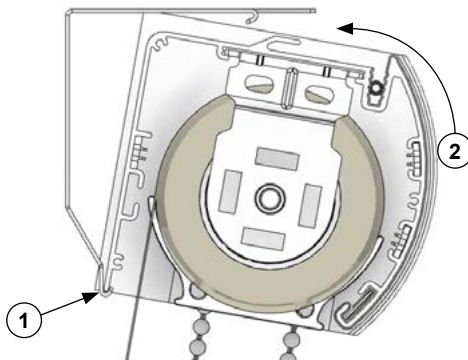
WALL MOUNT

leave a 1/4" between the ceiling and the mounting bracket



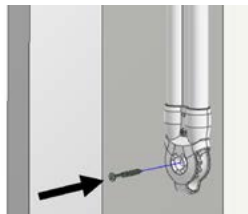
4 INSTALL THE SHADE

- (1) Insert the back edge of the cassette onto the bottom of each mounting bracket.
- (2) Starting from the center of the shade, push the cassette back and up until it snaps into the mounting bracket.
- (3) You will hear a click when the cassette snaps in to the mounting brackets.



5 INSTALL THE SAFETY SHIELD

NOTE: For shades with chain operation only.



Programming Instructions

MOTOR INFORMATION

1. Ensure motor is protected. Any damages during transportation, storage, installation or misuse can cause the motor to not work properly.
2. Charge the motor every 6 months to ensure optimal performance.
3. If the battery charge is at a lower level, the motor will beep 10 times to prompt that it needs to be charged.
4. Maximum running time of the motor is 6 minutes without limits. Motor will be asleep after six minutes has passed. Motor will still be in wake up/programming mode once the motor has restarted.

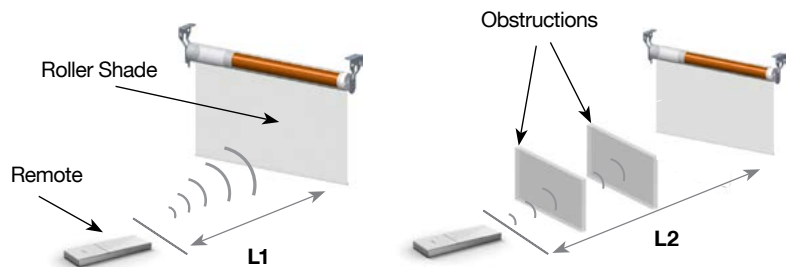
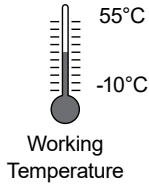


Programming resides with the motor. Each motor can store up to 20 copied channels.

CONTROL RANGE



SIGNAL STRENGTH AND RANGE MAY VARY DEPENDING ON THE ACTUAL ENVIRONMENT.



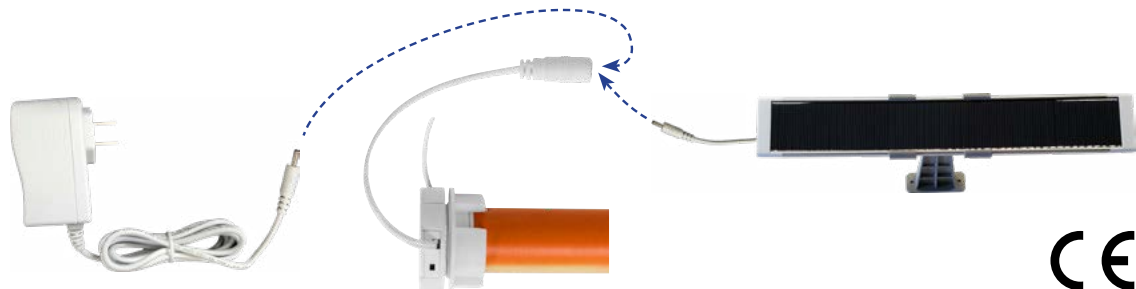
L1 Open Area	L2 With Obstructions	Emission Frequency
200m	35m	433.92/868 MHz

RECHARGING THE MOTOR

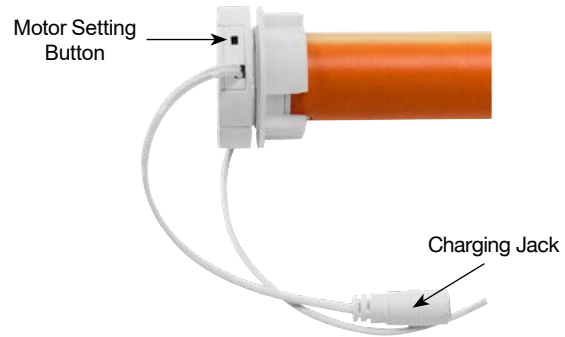
To recharge the motor's battery, connect the SG DC charger to the motor head charging jack and plug the charger into a standard electrical outlet. When the battery is fully charged, the indication light on the charger will switch from red to green. You can also use the SG Solar Panel to keep the battery constantly charged while exposed to sufficient sunlight.



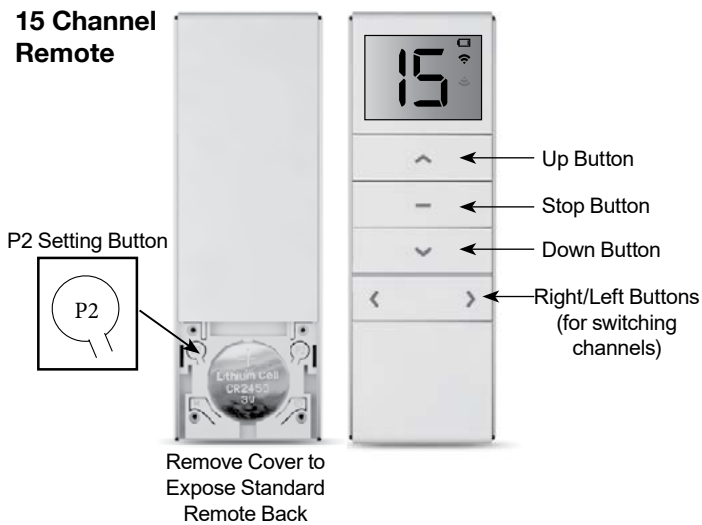
IF PURCHASING MORE THAN ONE CHARGER, PLEASE ENSURE THE OUTPUT VOLTAGE ON THE CHARGER AND MOTOR MATCH.



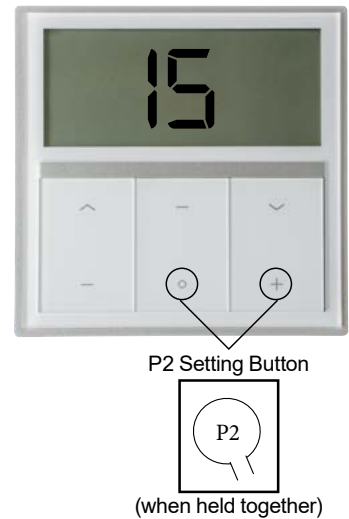
MOTOR BUTTON LAYOUT



REMOTE BUTTON LAYOUT



15 Channel Glass Wall Switch



15 Channel Wall Switch



BEFORE YOU BEGIN:



1. As a standard, motors are shipped in factory default mode without limits set.
2. Channel "0" cannot be programmed on a multi channel remote. It is intended to be a master channel for all motors.
3. Select the intended channel before activating wake-up mode, basic or advanced program settings.

STEP 1: PREPARING FOR PROGRAMMING

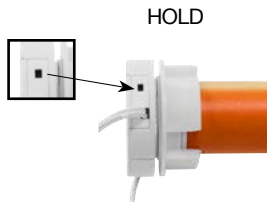
WAKE-UP MODE

(Must Be Done Before Basic & Advanced Programming)

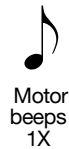
Required to make the connection between the remote channel and the motor. During each of the following settings the time between each operation must be shorter than 10 seconds, otherwise the program will be canceled, and the motor will be back in default mode. Follow the steps below to wake-up the motor.



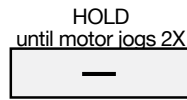
Note: No assigned limits in wake-up mode.



until motor jogs 1X then RELEASE to activate this motor



Motor beeps 1X



Motor beeps 3X



Setup is complete



Test shade: Move shade by holding the up or down button to ensure that the motor works on the desired channel and moves in the correct direction.



Do not let the shade crash into the valance or unroll from the tube.

SWITCH DIRECTION

HOLD TOGETHER



until motor jogs 1X

Setup is complete



Test shade: Move shade up and down to ensure that the direction has been changed.



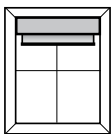
Do not let the shade crash into the valance or unroll from the tube.

STEP 2: BASIC PROGRAMMING

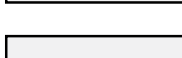
SETTING MOTOR LIMITS

Allows you to set two positions: the upper and lower limits. This can be applied to each shade per channel. During limit setting, the time between two operations must be shorter than 2 minutes, otherwise the program will be cancelled, and the motor will be back in wake-up mode. Follow the steps below to set motor limits.

GO TO DESIRED UPPER LIMIT



HOLD TOGETHER



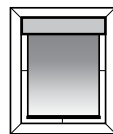
until motor jogs 2X



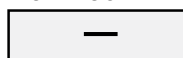
Motor beeps 3X



GO TO DESIRED LOWER LIMIT



HOLD TOGETHER



until motor jogs 2X



Motor beeps 3X



Setup is complete



Holding up or down will move the shade automatically

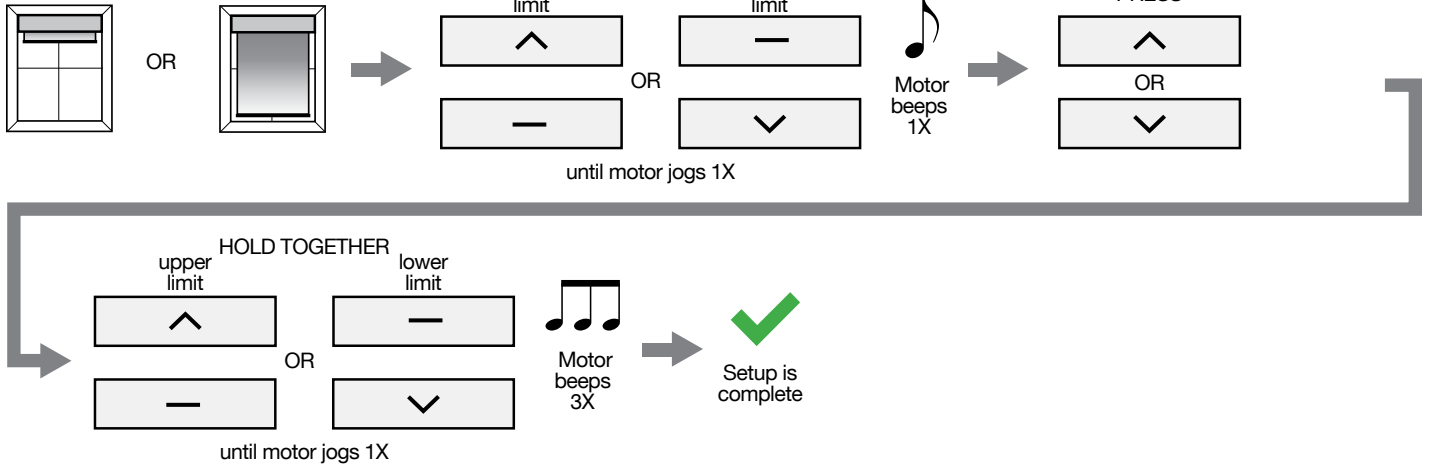


Test shade: Move shade up and down to test upper and lower limits. Refer to "Adjusting Motor Limits" if limits require fine tuning.

STEP 3: ADVANCED PROGRAMMING

ADJUSTING MOTOR LIMITS

GO TO UPPER OR LOWER LIMIT



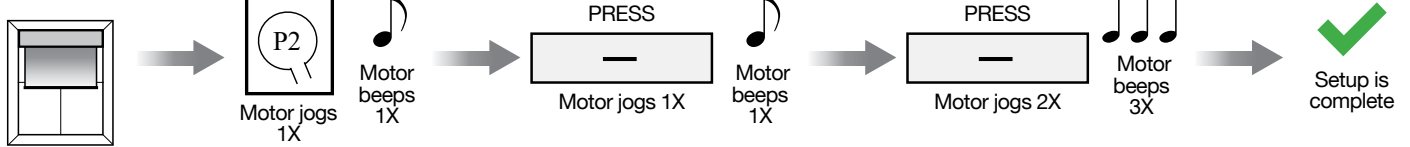
SETTING A PREFERRED POSITION

Allows you to set a third limit position for the shade per channel. Follow the steps below to set a preferred position.



WHILE IN TILT FUNCTION SHADE WILL GO TO LOWER LIMIT FIRST AND THEN PROCEED TO THE PREFERRED POSITION.

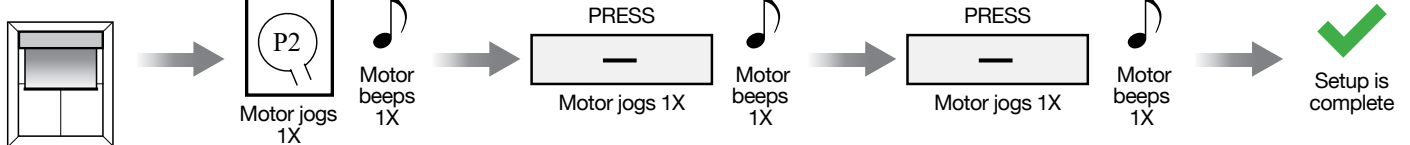
GO TO PREFERRED POSITION



When setup is complete, hold the stop button to go to the preferred shade position. Follow the steps above to program different preferred positions to separate channels on a 15 channel remote.

DELETING A PREFERRED POSITION

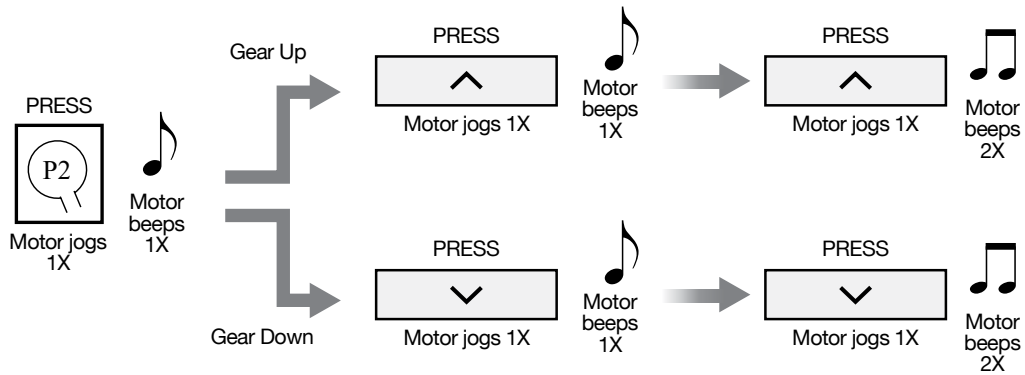
GO TO PREFERRED POSITION



STEP 3: ADVANCED PROGRAMMING (CONTINUED)

SPEED ADJUSTMENT

Each motor has three speeds. To move between the different speeds, follow the diagram below.



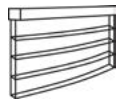
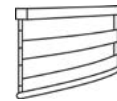
TILT MODE INCREMENTAL MOVEMENT

Tilt mode is used to move the shade in small increments for fine adjustment. It is most effective when programmed with a standard remote (button remote). Follow the steps below to set the shade in tilt mode or remove shade from tilt mode.

Recommended with:

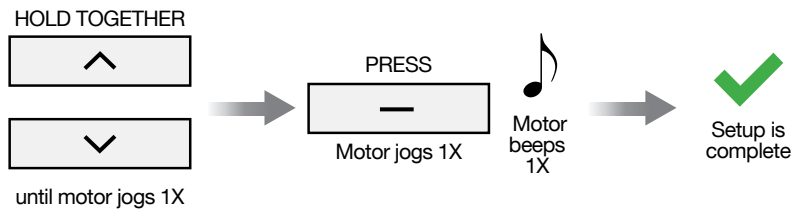
Interlude / Banded

Illusions / Sheer

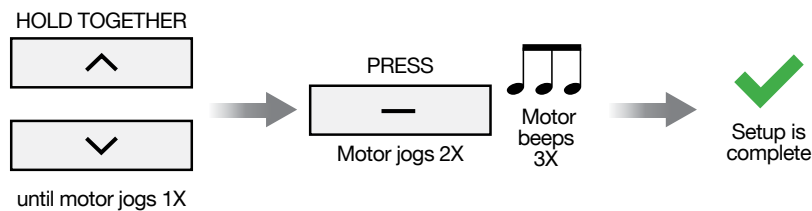


TILT MODE WILL REMAIN ACTIVE IN ALL MODES
(Except Step 2: Basic Programming) UNLESS REMOVED

SETTING TILT MODE



DELETING TILT MODE

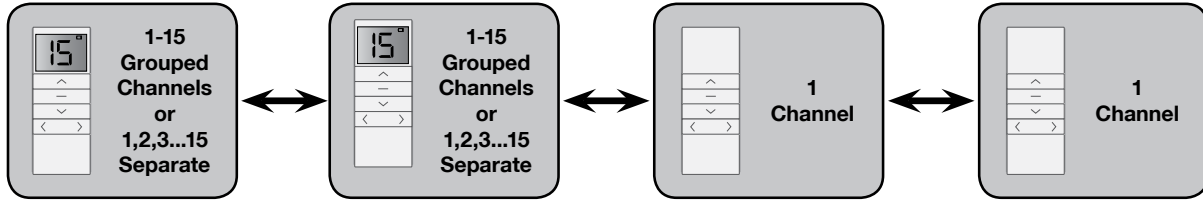


Test shade: press the up or down buttons repeatedly for fine adjustment. To move shade automatically, hold the up or down buttons and release once the shade begins to move.

STEP 3: ADVANCED PROGRAMMING (CONTINUED)

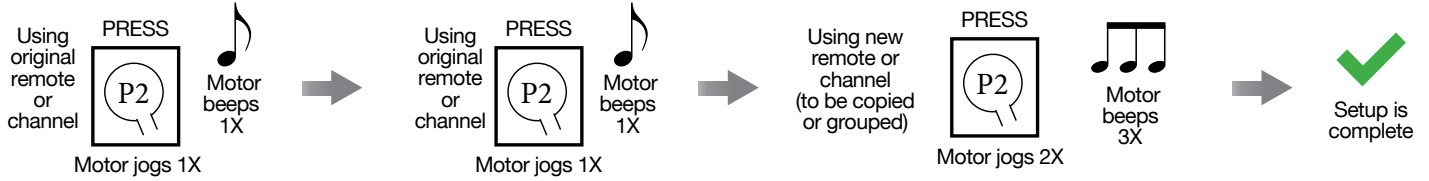
COPYING, DELETING OR GROUPING WITH A REMOTE

The remote scenario chart below outlines different ways to copy, delete or group channels using separate remotes.



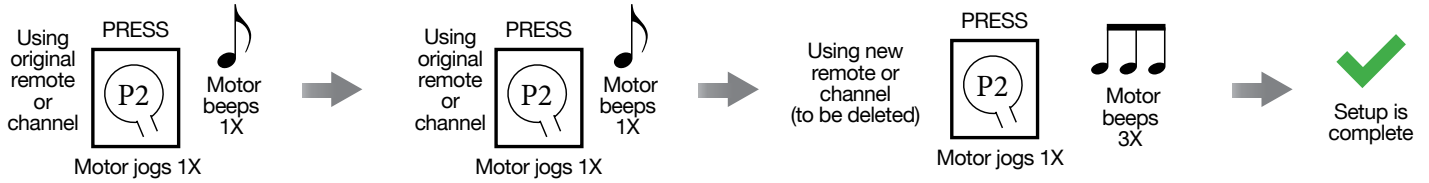
Separate channels can also be programmed this way within one 15 channel remote. Follow the steps below to copy, delete or group channels.

COPYING/GROUPING CHANNELS



DELETING CHANNELS

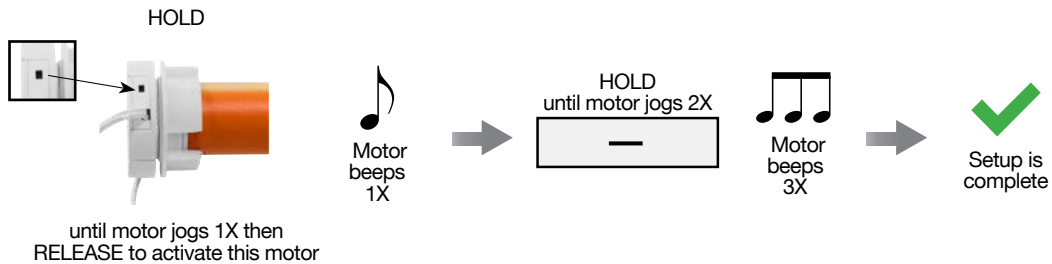
Note: this only works on previously copied/grouped channels.



COPIE OU SUPPRESSION D'UN MOTEUR PRÉCÉDEMMENT PROGRAMMÉ



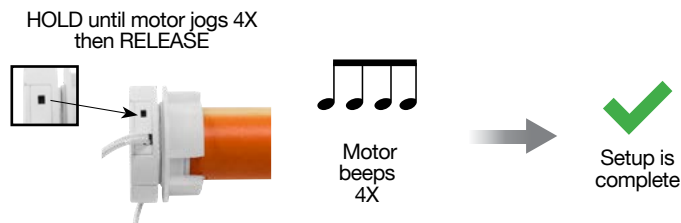
DELETING OR TRANSFERRING GROUPS OF MOTORS ARE RECOMMENDED TO BE DONE USING THE ORIGINAL REMOTE THAT WAS SET UP.



PERFORM FACTORY RESET ON MOTOR



Only perform a motor reset if necessary.

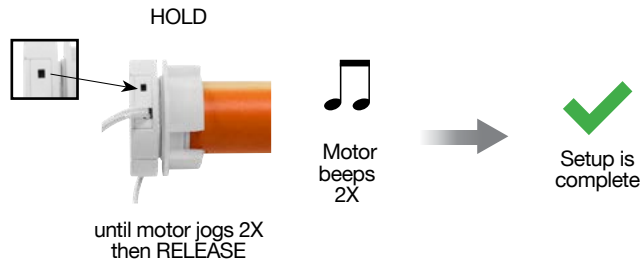


STEP 3: ADVANCED PROGRAMMING (CONTINUED)

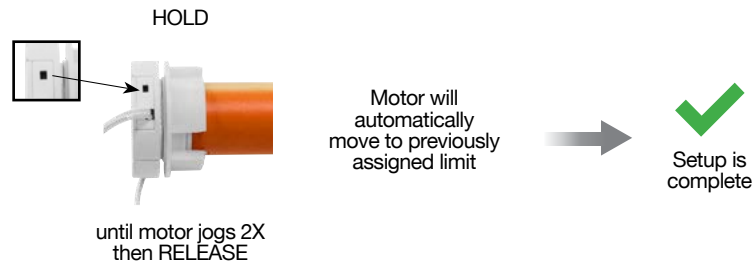
MOTOR SHIELDING

The mode allows a motor's wireless radio signal to become temporarily disabled to save the battery life.

DISABLE SIGNAL:



ENABLE SIGNAL:



If no limits are set, the motor will not move when enabled.

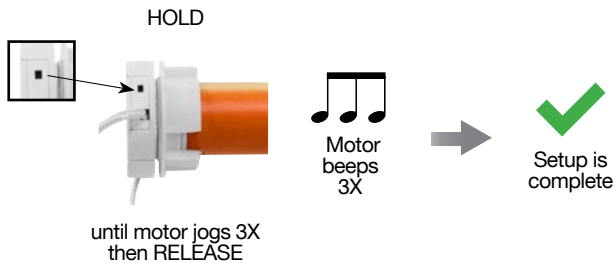
OPERATING SHADE AT MOTOR HEAD

This mode allows you to operate the shade in the event that the remote goes missing or is lost.



SWITCHING DIRECTION AT MOTOR HEAD

The change of direction can be done after limits have been set.



Test shade: Move shade up and down to ensure that the direction has been changed.