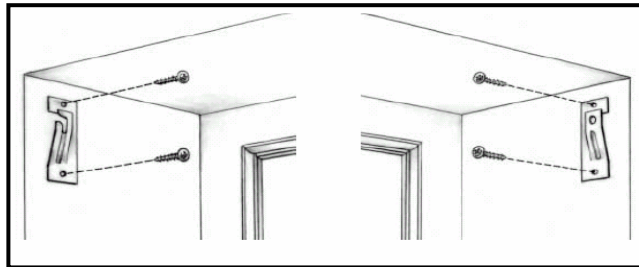


Roller Shades Instructions Spring Roller (Inside Mount)

The roller shade, when mounted should not make contact with the top of the window frame or any other obstruction when raised and lowered. Position the mounting brackets inside the window frame. The brackets need to be aligned and level with one another. When the shade is installed it should move freely between the brackets.

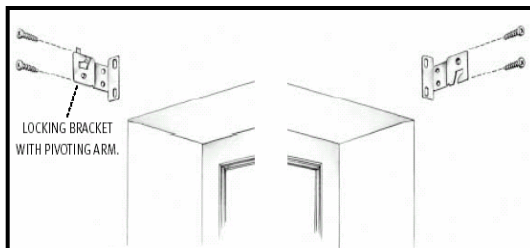


Spring Roller-Standard Roll 163L

For Standard roll shades install the slotted bracket on the left side of the window frame and the bracket with the round hole on the right.
For Reverse roll shades install the slotted bracket on the right and the bracket with the round hole on the left.

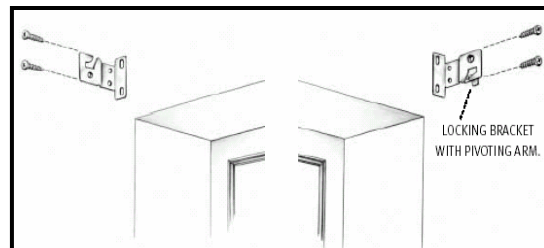
Roller Shades Instructions Spring Roller (Outside Mount)

The roller shade, when mounted should not make contact with the top of the window frame or any other obstruction when raised and lowered. Position the mounting brackets outside the window frame. The brackets need to be aligned and level with one another. When the shade is installed it should move freely between the brackets, be sure to allow 1/8" of additional space between the brackets so the mechanism will rotate freely.



Spring Roller - Standard Roll RR641 *

Attach the mounting brackets to the wall or window frame with the locking bracket on the **left**. These brackets can be used for ceiling applications by rotating the foot of the brackets to the top.



Spring Roller - Reverse Roll RR641 *

Attach the mounting brackets to the wall or window frame with the locking bracket on the **right**. These brackets can be used for ceiling applications by rotating the foot of the brackets to the top.

*Shades with a large diameter rolls will receive an extended version of this bracket (RR642)

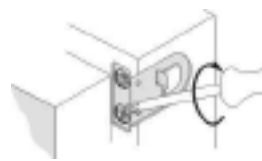
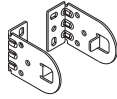
Roller Shade Installation Instructions

Continuous Loop Clutch System with Spring Loaded End Plug

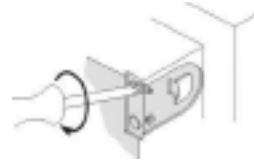
Please Follow These Installation Instructions

- 1 The universal brackets can be mounted in three different ways

Bracket Part # F5
Extension Bracket Part # F6



Mounting Outside Frame



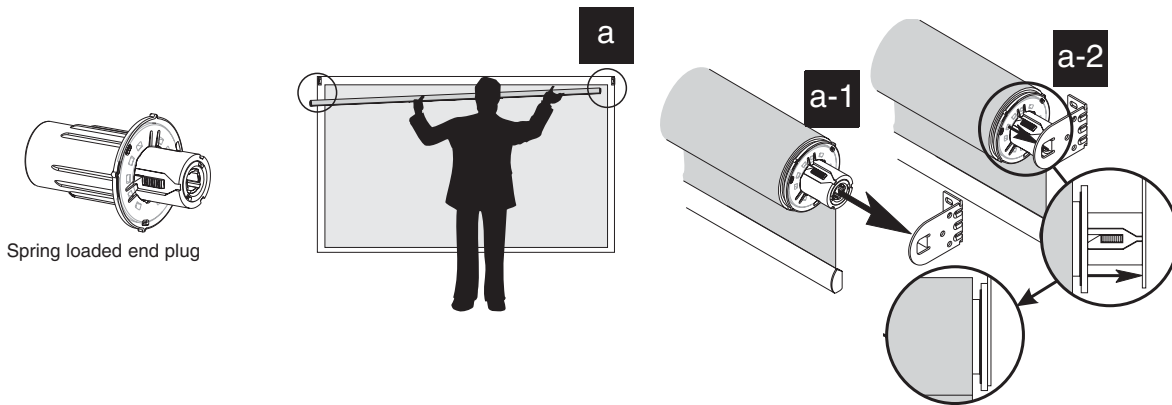
Mounting Inside Frame



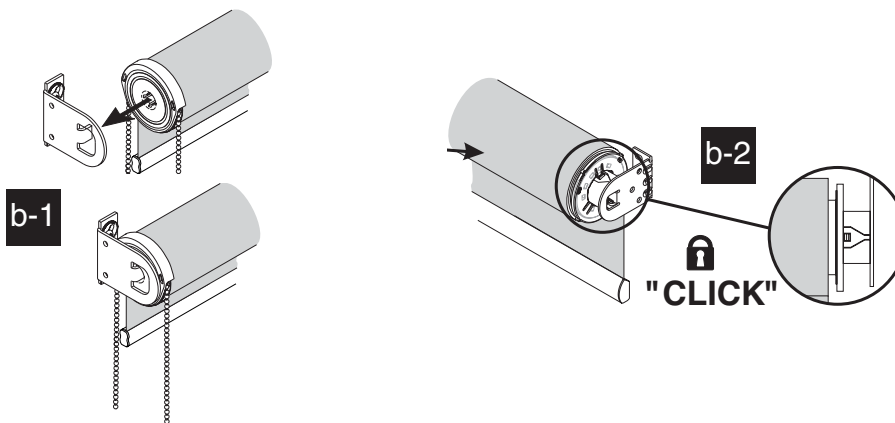
Ceiling Mount

- 2 Installing the roller shade

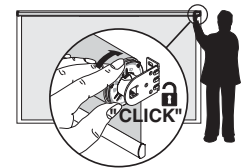
a. Place spring loaded end plug side into the bracket and compress until firmly inserted into the bracket



b. Place other end of the shade into position on the bracket and adjust until the spring loaded end plug side CLICKS in place. Once you hear a CLICK, the shade is locked in place



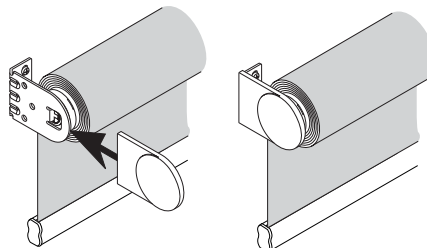
To unlock the shade, slide plastic stop to release and pull shade away from bracket



- 3 For OB Mounts

a. Slide decorative end caps over the brackets

Covers are not available for the F7 Brackets (2 1/4" x 3 1/4")



With safety in mind we have provided you with a P-Clip to keep the beaded chain out of the reach of small children. Mount the P-Clip to the side of the window frame for inside mount, or the frame or wall for outside mount. Do not apply tension to the chain control. The chain should run through the P-clip freely.