

# ROMAN SHADES

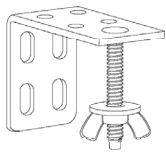
## LIFT SYSTEMS: CORDLESS LIFT



The difficulty level of this installation is ranked at **Level 1**. *A piece of cake!*

If you have questions or get stuck, call our Customer Care Team at 888-685-1735, or email [info@selectblindsCanada.ca](mailto:info@selectblindsCanada.ca)

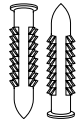
### HARDWARE AND PARTS INCLUDED



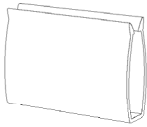
BRACKET WITH WINGNUT



SCREWS



WALL ANCHORS\*



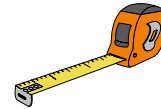
CORDLESS HANDLE

\*Recommended if mounting into hollow drywall.

### TOOLS REQUIRED



PENCIL



TAPE MEASURE



POWER DRILL



5/64" DRILL BIT



PHILLIPS SCREWDRIVER



STEP LADDER



PHILLIPS DRILL BIT



LEVEL

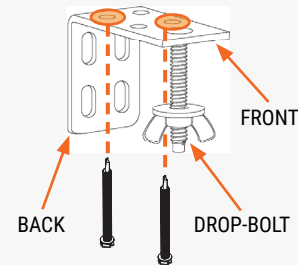
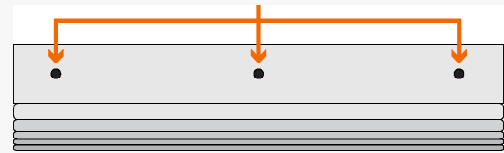
## 1. MOUNTING THE BRACKETS

**NOTE:** Cordless shades have pre-drilled holes in the top of the headrail. You will use these holes as a guide for your bracket placement. If using your own screws instead of those provided, be sure to pre-drill a small hole with a 5/64" drill bit before the final screws go in to attach brackets.

### INSIDE MOUNT

1. Grasp the shade by the headrail and hold it up inside the top of the window. Set it back until the front of the shade is flush with the wall. Hold the shade in place, and with a pencil, make a mark through each hole in the headrail. Set the shade aside.
2. Take a bracket and center the drop-bolt over each mark. Use the holes in the top of the bracket to mark where your two screws will go.
3. Align the brackets with the holes, and use a Phillips drill bit to securely fasten the screws.

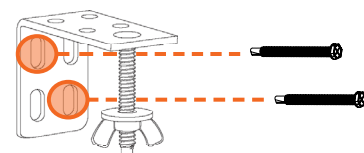
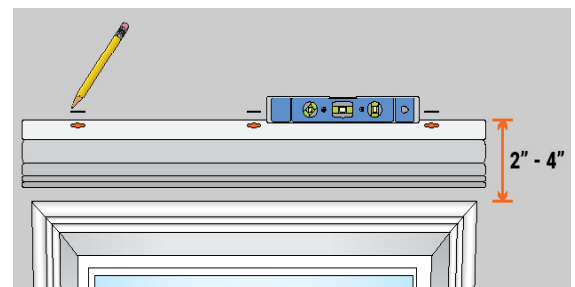
PRE-DRILLED HOLES



### OUTSIDE MOUNT

**NOTE:** If using your own screws instead of those provided, be sure to pre-drill a small hole with a 5/64" drill bit before the final screws go in to attach brackets.

1. Center and hold the headrail at least two inches above the window. While keeping the shade level, make a small line with your pencil just above each of the pre-drilled holes in the headrail. Set the shade aside.
2. Align the top edge of a bracket along each mark, and use the holes in the back of the bracket to mark where your two screws will go.
3. Align the brackets with the holes, and use a Phillips drill bit to fasten the screws in place.



\*If you are using wall anchors, pre-drill with a 1/4" bit instead, and tap the wall anchors into the holes with a hammer before drilling in the screws.

## 2. ATTACHING THE SHADE

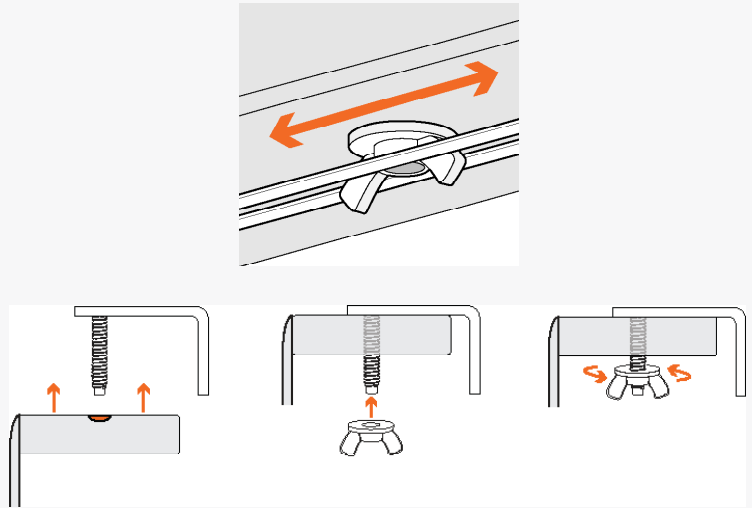
### INSIDE AND OUTSIDE MOUNT

**IMPORTANT:** The cords running along the underside of the headrail must be able to move freely. **To avoid tangling or damage to the cords, make sure the “wings” of the wingnut are facing the sides of the window.**

1. Remove the wingnuts from the brackets if you haven't done so already.

2. With the front of the shade facing you, fit the pre-drilled holes of the headrail to each of the drop-bolts on the brackets. While holding the headrail to the brackets with one hand, use your other hand to attach each of the wingnuts to the drop-bolts. Tighten the wingnuts until the shade is firmly held in place .

3. **IMPORTANT:** Please ensure that you fully close the headrail by attaching the headrail fabric together with the hook-and-loop fastening strip.

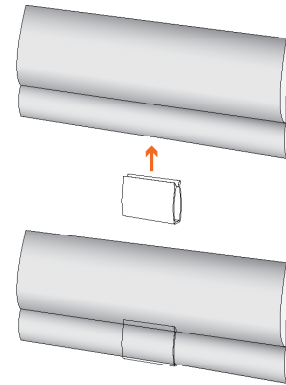


## 3. ATTACHING THE LIFT HANDLE

### CORDLESS ROMAN SHADES

**NOTE:** Cordless roman shades come with a clear plastic handle to help protect the fabric over multiple uses.

1. At the bottom pleat of the roman shade, locate the sewn-in hem bar.
2. Clip the handle to the center of the bottom hem bar.
3. To operate, grab the handle with your hand, and gently lift or lower the hem bar; the shade will stay in place when released.



### CLEANING INSTRUCTIONS

**NOTE:** All fabrics are different and some may be easier to clean than others. We recommend cleaning your shades as often as once a month. Here are some general guidelines on how to do so:

1. For regular maintenance, use a duster or a vacuum with a brush attachment and run it over the front and back of the shade.
2. To spot clean stains, use a damp rag with a very mild, gentle detergent or soap. Dab at the affected spots; do NOT rub! Let the dampened area air-dry and repeat as necessary.
3. If your roman shade has wrinkles, you can use a basic steamer to remove them. Hold the steamer roughly six inches away from the fabric and wave the steamer back and forth over the wrinkled areas.

### WARRANTY AND REPLACEMENT

To learn more about our product warranties, please visit: <https://www.selectblindscanada.ca/warranty>

For replacement parts, and/or to file a warranty claim for a product that is damaged, defective, or missing parts, please call our Customer Care Team at 888-685-1735, or email [info@selectblindscanada.ca](mailto:info@selectblindscanada.ca).

## WARNING

**STRANGULATION HAZARD** — Young children can be strangled by cords. Immediately remove this product if a cord longer than 22 cm or a loop exceeding 44 cm around becomes accessible.